



ADIMUS  
Ambiente Digitale  
Musei Sapienza

---

**Ranunculus baudotii Godr. - RO-HSepv  
15017**

**Tipo bene culturale**

Beni Naturalistici-Botanica

**Denominazione contenitore giuridico**

Museo Erbario

**Inventario (beni mobili)**

RO-HSepv 15017

**Riferimento cronologico**

SECOLI&gt;ARCHI DI SECOLI&gt;XIX-XX

---

**Misure**

Tipo di misura:

altezzaxlunghezza

Unità di misura:

cm

Valore:

43,80x30

---

**Scheda di dettaglio****Tipo scheda:**[BNB<sub>\[4\]</sub>](#)**Codice internazionale erbario:**[RO<sub>\[2\]</sub>](#)**Definizione:**[erbario<sub>\[3\]</sub>](#)**Denominazione erbario:**

Museo Erbario

**Tipologie erbario:**[erbario generale<sub>\[4\]</sub>](#)**Denominazione collezione/raccolta:**

SOCIÉTÉ POUR L'ÉCHANGE DES PLANTES VASCULAIRES DE L'EUROPE ET DU BASSIN MÉDITERRANÉEN-Fascicule 24 (1990-1991) - Edit. J. Lambinon (LG), 1993

**Famiglia:**

RANUNCULACEAE

**Numero genere:**

10

**Specie nome completo:**

Ranunculus baudotii Godr.

**Genere:**

RANUNCULUS

**Specie nome:**

baudotii

**Determinavit:**

Vanhecke L.

**Numero fogli/parti:**

1

**Località di raccolta:**

Continente:

[Europa<sub>\[5\]</sub>](#)

Stato:

[Italia<sub>\[6\]</sub>](#)

Località:

Dudzele (Belgium, prov. West-Vlaanderen), artificial small lake nearby the new railroad from Zeebrugge to Brugge, IFBL B2.51.42, alt. &lt; 5 m, shallow, probably somewhat brackish water (soil consisting of silty fine sand), together with Zannichellia palustris subsp. pedicellata very abundant

**Altitudine:**

5

**Legit:**

Vanhecke L. - 8774

**Data esatta:**

1991 07 11

**Revisioni botanica:**

Nome da revisione:

-

**Inventario:**

Numero:

RO-HSepv 15017

Collocazione:

2

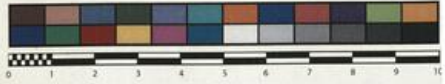
**Stima:**

Stima:

€ 3,00

Data stima:

2026



Museo Erbario Sapienza Roma



RO-HSeprv 15017

SOCIÉTÉ POUR L'ÉCHANGE DES PLANTES VASCULAIRES  
DE L'EUROPE ET DU BASSIN MÉDITERRANÉEN  
Fascicule 24 (1990-1991) - Edit. J. Lambinon (L.G.), 1993

n° 15017 *Ranunculus baudottii* Godr.

Dudzele (Belgium, prov. West-Vlaanderen), artificial small lake nearby the new railroad from Zeebrugge to Brugge, IFBL B2.51.42, alt. < 5 m, shallow, probably somewhat brackish water (soil consisting of silty fine sand), together with *Zannichellia palustris* subsp. *pedicellata* very abundant, July 11th, 1991.

Leg. et det. L. Vanhecke n° 8774

Rem. : Divided, submerged leaves yellowish-green, rigid, spread out; floating leaves with three, deeply segmented lobes, reniform in outline; intermediate, transitional leaves (present only on some individuals) divided in the proximal region; peduncle thick and long, curved over the whole of its length; sepals blue; nectar pits on the petals lunate to almost circular; achenes more or less clearly winged, dorsally as well as ventrally, 20-50, glabrous or almost so; receptacle densely hairy, remaining globose ? (elongation after flowering not very clear).

---

**Source URL:** <https://stage.adimus.it/node/22112>

**List of links present in page**

1. <https://stage.adimus.it/it/taxonomy/term/16993>
2. <https://stage.adimus.it/it/taxonomy/term/110764>
3. <https://stage.adimus.it/it/taxonomy/term/110730>
4. <https://stage.adimus.it/it/taxonomy/term/110744>
5. <https://stage.adimus.it/it/taxonomy/term/110761>
6. <https://stage.adimus.it/it/taxonomy/term/8303>